



Measure E
Safe and Modern Classrooms
21st Century Learning

June 22, 2017



Measure E-Project Schedules

Completed Projects:

- **Kings Beach Boiler Replacement**
- **Tahoe Lake Boiler Replacement**
- **Tahoe Lake Fire Panel Upgrade**
- **Tahoe Lake Elementary-Phase I: Parking Lot**

2017 Projects:

- **Tahoe Lake Elementary – Phase II: New Construction/Modernization/21st Century Learning**

2018 Projects:

- **Kings Beach Elementary School: New Construction/Modernization/21st Century Learning**

2022 Projects:

- **North Tahoe High School: New Band Room/Modernization/21st Century Learning**
- **North Tahoe School: Band Room Enhancements/Modernization/21st Century Learning**

MEASURE U/E:

- **Sierra Continuation High School – Completed**
- **North Tahoe Warehouse Facility – Completed**
- **Maintenance/Warehouse Facility located at District Office – Completed**
- **Cold Stream Alternative School (Rideout) – Complete in Winter 2018**

Tahoe Lake Elementary School

Project Schedule and Phasing

Phase I-Parking Lot Completed

Phase II-New Construction/Modernization

- Design Approved by DSA
- Full relocation of Tahoe Lake Elementary to Rideout in June 2017 for the 2017 - 2018 school year
- Award Trades May 3, 2017 and June 7, 2017
- Construction to Start in June of 2017
- Construction Completed by Winter of 2018

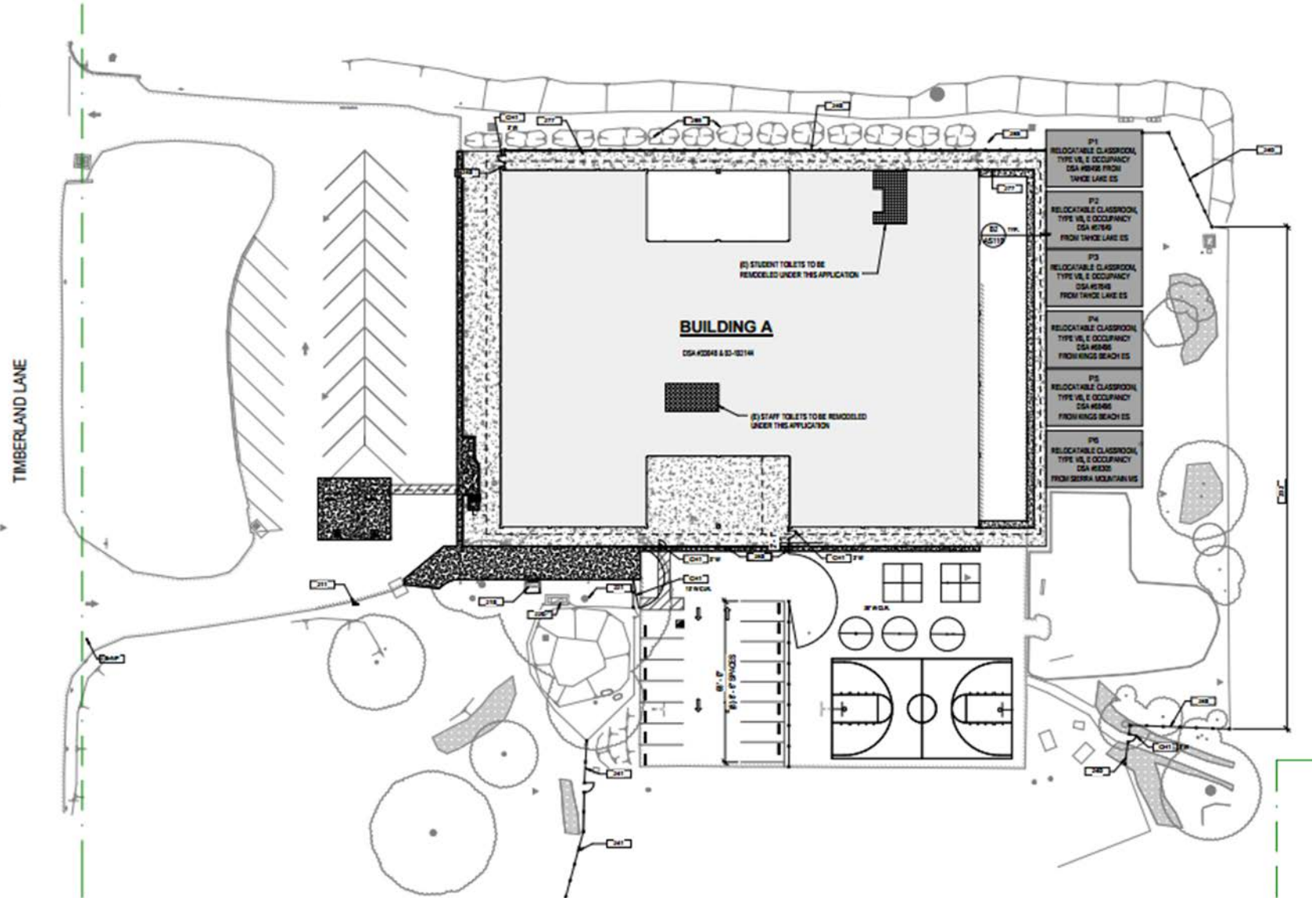


The floor plan illustrates the layout of the University of North Carolina at Chapel Hill campus. It features a central academic core with various buildings labeled, including classrooms, lecture halls, and research facilities. The plan also shows the surrounding streets, including North Campus Drive, and the location of the UNC-Chapel Hill Medical Center and the UNC-Chapel Hill Law Center. The plan is color-coded by building type: red for academic buildings, blue for administrative buildings, green for student housing, yellow for dining halls, and orange for libraries. Key areas include the main campus, the UNC-Chapel Hill Medical Center, and the UNC-Chapel Hill Law Center. The plan also shows the surrounding streets and the location of the UNC-Chapel Hill Research Triangle Park campus.

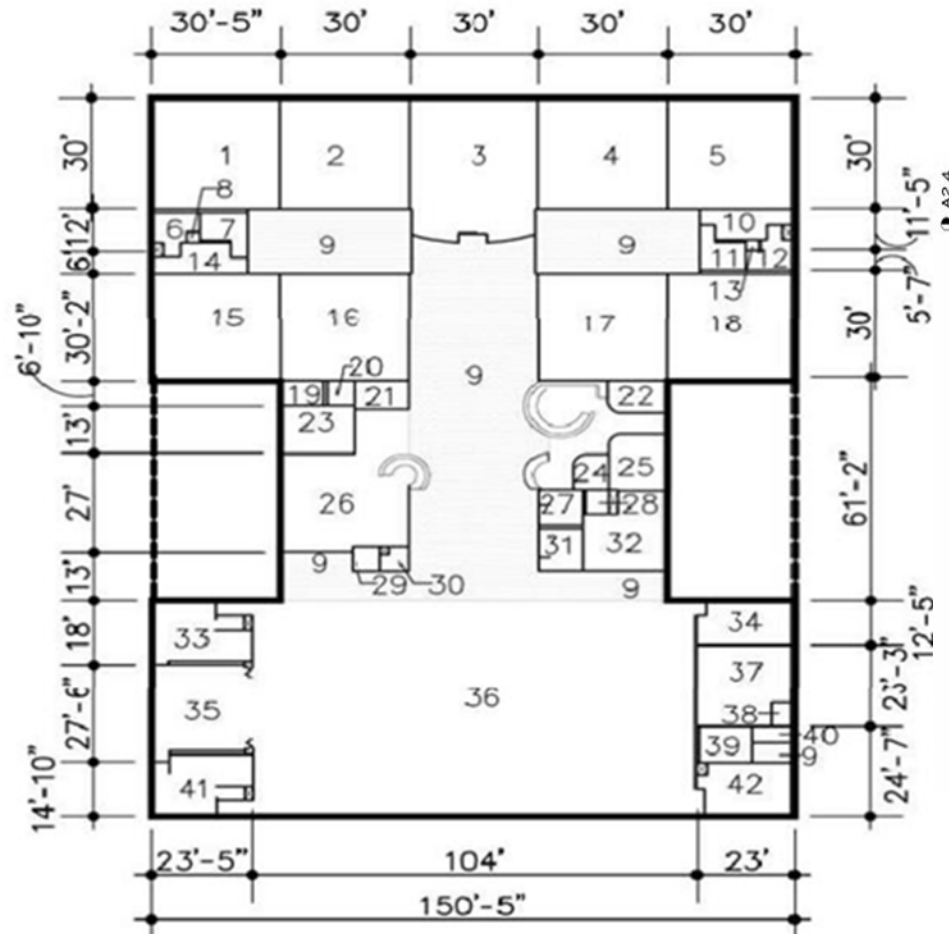
Tahoe Lake Elementary at Rideout



Tahoe Lake Elementary at Rideout



Tahoe Lake Elementary at Rideout



Kings Beach Elementary School



Scope of Work

Start Construction in Spring 2018

Complete Construction Fall 2019

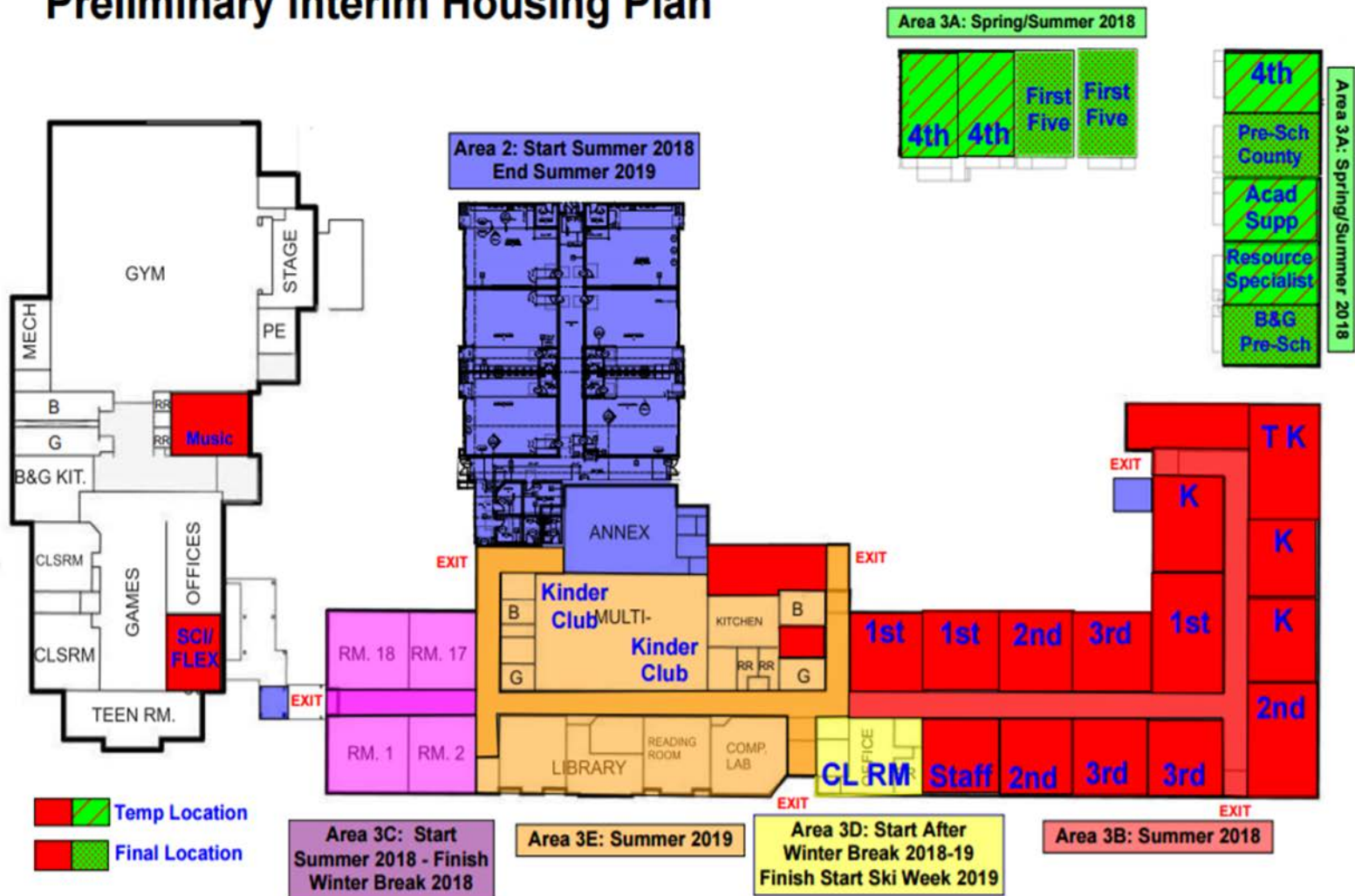
- Modernize existing buildings
- Upgrade building systems
- Add new kindergarten and classrooms
- Science Greenhouse
- New parking lot and drop-off
- Campus quad
- Fencing
- Fire alarm upgrade
- Exterior lighting
- Repair hard courts
- Flexible furniture
- Technology infrastructure
- Classroom technology package

Project Architect: JK Architecture

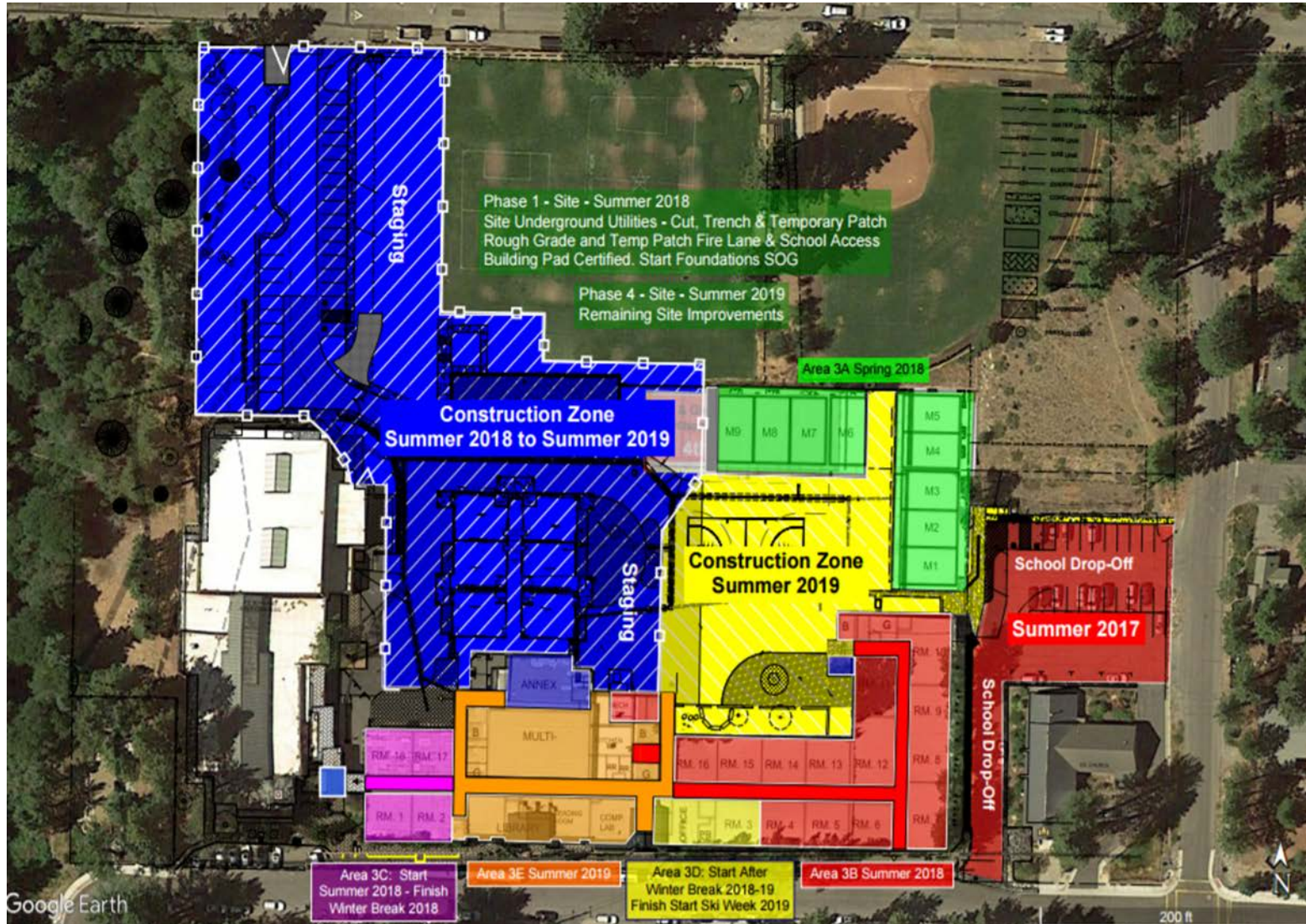
TTUSD Project Manager: Jorge Rojas

Contractor: TBD

Site Budget: \$18,073,675



Google Earth



Maintenance/Warehouse Facility-Measures E/U - 2017

Maintenance/Warehouse:

- Geney/Gassiot, Inc. Construction Bid: \$2,184,000
- Estimated Changes: \$60,000



Maintenance/Warehouse Facility-Measures E/U - 2017



Maintenance/Warehouse Facility-Measures E/U - 2017



Maintenance/Warehouse Facility-Measures E/U - 2017





